

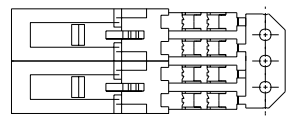
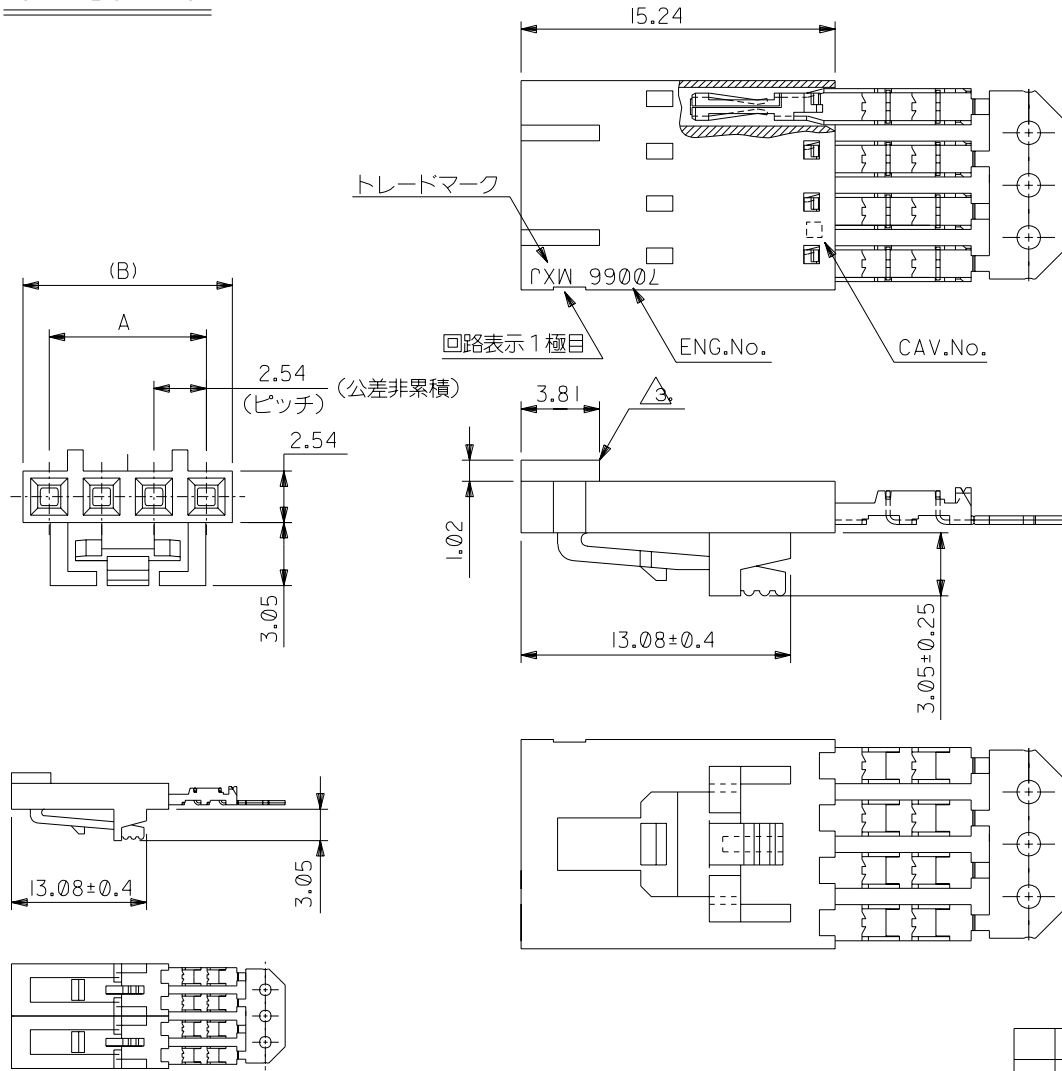
ENG. NO.
SD-70400-06**

EDP NO.
—#—

ALL DIMENSIONS IN METRIC DO NOT SCALE DRAWING

0.1MM

OPTION G



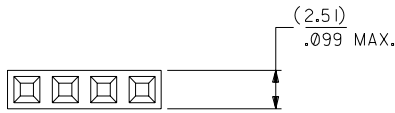
注記:

- 材料
ハウジング：ガラス入りポリエステル UL 94V-0
ターミナル：燐青銅
- 仕上げ
接点部：金メッキ 0.38 μm MIN.
圧接部：錫メッキ 1.91 μm MIN.
下地メッキ：ニッケルメッキ 1.27 μm MIN.
- 極性リブは、2極及び3極の場合1箇所のみとする。但し3極の場合のリブは、1極目と2極目の間とする。
- 適合オスコネクター：70107-****, 70018-****
- 適合ヘッダー：70389-****, 70391-****
- ハウジングの色：黒

| | | | |
|-------|-------|--------------|----|
| 63.50 | 60.96 | 70400-0689 | 25 |
| 60.96 | 58.42 | -0688 | 24 |
| 58.42 | 55.88 | -0687 | 23 |
| 55.88 | 53.34 | -0686 | 22 |
| 53.34 | 50.80 | -0685 | 21 |
| 50.80 | 48.26 | -0684 | 20 |
| 48.26 | 45.72 | -0683 | 19 |
| 45.72 | 43.18 | -0682 | 18 |
| 43.18 | 40.64 | -0681 | 17 |
| 40.64 | 38.10 | -0680 | 16 |
| 38.10 | 35.56 | -0679 | 15 |
| 35.56 | 33.02 | -0678 | 14 |
| 33.02 | 30.48 | -0677 | 13 |
| 30.48 | 27.94 | -0676 | 12 |
| 27.94 | 25.40 | -0675 | 11 |
| 25.40 | 22.86 | -0674 | 10 |
| 22.86 | 20.32 | -0673 | 9 |
| 20.32 | 17.78 | -0672 | 8 |
| 17.78 | 15.24 | -0671 | 7 |
| 15.24 | 12.70 | -0670 | 6 |
| 12.70 | 10.16 | -0669 | 5 |
| 10.16 | 7.62 | -0668 | 4 |
| 7.62 | 5.08 | -0667 | 3 |
| 5.08 | 2.54 | 70400-0666 | 2 |
| (B) | A | MATERIAL No. | 極数 |

| | | | |
|---|---------------------------|---|---------|
| 材料 MATERIAL | | MOLEX-JAPAN CO.,LTD. 日本モレックス株式会社 | |
| 注記参照 | | EDP. NO. —#— | |
| C 変更 (J2004-4519) | M.S. 04/05/31 | 適用電線範囲 WIRE RANGE AWC#24 | |
| B 変更 (T20159) | S.M. H.I. 92/5/20 | 被覆外径 INS. RANGE Ø 1.35 MAX. | |
| A 変更 (T90267) | H.H. M.S. 89/9/8 | DRAWN BY 11/17/87 CHK'D BY T.FURUHATA M.SASAO | |
| 0 新規作成 (T80231) | F.F. M.S. 88/11/17 | DATE 11/17/87 | |
| 記号 | 変更内容 REVISION RECORD | DR. CHK. | 日付 DATE |
| 一般公差 GENERAL TOLERANCES | REVISE ONLY ON CAD SYSTEM | | |
| APP'D BY S.YAMADA | | 尺度 SCALE 4-1 | |
| TITLE 名称 (OPTION G) SL 2.54 SINGLE ROW ASSEMBLY, FEMALE I.D. CONN. -LEAD FREE- | | REV C | |

OPTION A

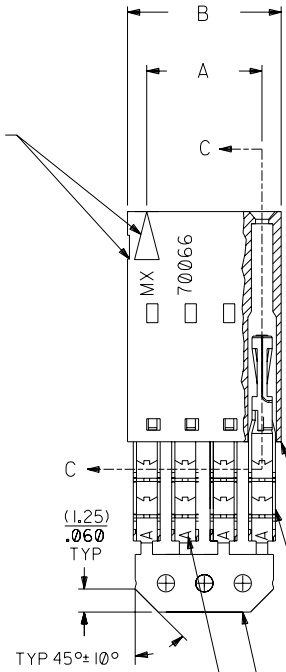


NOTES:

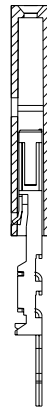
- 1) TO BE USED WITH (24) AWG. STRANDED WIRE WITH (1.35)/.053 DIA. MAX. INSULATION.
- 2) SEE CHART FOR CIRCUIT SIZES.
- 3) STANDARD PACKAGING PER PK-70873-0001. OPTIONAL PACKAGING MAY BE AVAILABLE, REQUEST DWG. PK-70400
- 4) PARTS STACKABLE END TO END AND SIDE BY SIDE ON (2.54)/.100 CENTERS.
- 5) REFER TO PRODUCT SPECIFICATION: PS-70400.
- 6) SEE DWG. SDA-70400-**** (SHT. 5) FOR OPTIONAL HOUSING DETAILS.
- 7) 4 CIRCUIT SHOWN.
- 8) TO MATE WITH MOLEX (2.54)/.100 CENTERLINE HEADERS.

9) 2 CIRCUIT ASSEMBLIES SUPPLIED AS GROUPED PAIRS.

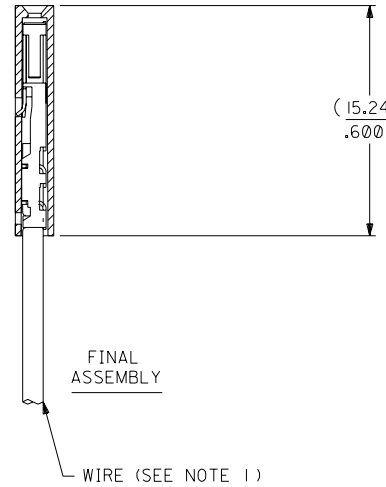
CIRCUIT NO. 1
SLOT OR ARROW



SECTION C-C



PRE-LOADED ASSEMBLY



FINAL ASSEMBLY

HOUSING PART NO. 70066-****
MATERIAL: G.F. POLYESTER, 94V-0

TERMINAL PART NO. 70028-****
MATERIAL: PHOSPHOR BRONZE
PLATING PER ES-88-***

15 GOLD - .000015 MIN. GOLD IN SELECT AREA WITH .000075 MIN. TIN IN SELECT AREA OVER .000050 MIN. NICKEL OVER-ALL.

*THE PRIMARY SHIPPING CARTON WILL BE LABELED "COMPLIANT TO ROHS DIRECTIVE 2002/95/EC AND ELV ANNEX II OF DIRECTIVE 2000/53/EC". CARTONS WITHOUT THIS LABEL MAY CONTAIN PRODUCT WITH LEAD.

| I.D. SLOT CODE TO WIRE GAUGE CHART | |
|------------------------------------|------------|
| I.D. SLOT CODE | WIRE GAUGE |
| A | 24 AWG. |

| PLATING CODE (STRIPE ON CARRIER STRIP) | |
|--|--------|
| PLATING | COLOR |
| 15 GOLD | YELLOW |

| CKT. SIZE | DIMENSIONS (INCH) | | EDP. NO. | ENG. NO. |
|-----------|--------------------|--------------------|------------|--------------|
| | A | B | | |
| 2 | (2.54) .100 | (5.05) .199 | 14-56-2021 | A-70400-0526 |
| 3 | (5.08) .200 | (7.59) .299 | 14-56-2031 | A-70400-0527 |
| 4 | (7.62) .300 | (10.13) .399 | 14-56-2041 | A-70400-0528 |
| 5 | (10.16) .400 | (12.67) .499 | 14-56-2051 | A-70400-0529 |
| 6 | (12.70) .500 | (15.21) .599 | 14-56-2061 | A-70400-0530 |
| 7 | (15.24) .600 | (17.75) .699 | 14-56-2071 | A-70400-0531 |
| 8 | (17.78) .700 | (20.29) .799 | 14-56-2081 | A-70400-0532 |
| 9 | (20.32) .800 | (22.83) .899 | 14-56-2091 | A-70400-0533 |
| 10 | (22.86) .900 | (25.37) .999 | 14-56-2101 | A-70400-0534 |
| 11 | (25.54) 1.000 | (27.91) 1.099 | 14-56-2111 | A-70400-0535 |
| 12 | (27.94) 1.100 | (30.45) 1.199 | 14-56-2121 | A-70400-0536 |
| 13 | (30.48) 1.200 | (32.99) 1.299 | 14-56-2131 | A-70400-0537 |
| 14 | (33.02) 1.300 | (35.53) 1.399 | 14-56-2141 | A-70400-0538 |
| 15 | (35.56) 1.400 | (38.07) 1.499 | 14-56-2151 | A-70400-0539 |
| 16 | (38.01) 1.500 | (40.61) 1.599 | 14-56-2161 | A-70400-0540 |
| 17 | (40.64) 1.600 | (43.15) 1.699 | 14-56-2171 | A-70400-0541 |
| 18 | (43.18) 1.700 | (45.69) 1.799 | 14-56-2181 | A-70400-0542 |
| 19 | (45.72) 1.800 | (48.23) 1.899 | 14-56-2191 | A-70400-0543 |
| 20 | (48.26) 1.900 | (50.77) 1.999 | 14-56-2201 | A-70400-0544 |
| 21 | (50.80) 2.000 | (53.31) 2.099 | 14-56-2211 | A-70400-0545 |
| 22 | (53.34) 2.100 | (55.85) 2.199 | 14-56-2221 | A-70400-0546 |
| 23 | (55.88) 2.200 | (58.39) 2.299 | 14-56-2231 | A-70400-0547 |
| 24 | (58.42) 2.300 | (60.93) 2.399 | 14-56-2241 | A-70400-0548 |
| 25 | (60.96) 2.400 | (63.47) 2.499 | 14-56-2251 | A-70400-0549 |

| REV. NO. | DATE | BY | REVISIONS |
|----------|------|----|---|
| E | | | REVISED PER ECR NO. U82110 10-17-88 AAB |
| F | | | LEAD FREE UCP2004-1769 RWHITE 04/03/17 |
| EI | | | ADD CARRIER CHAMF ECR# U80110 05/20/98 LMCGRATH |
| C | | | REDRAWN ON CAD ECR# 8842 5/8/86 W.Z. |
| LTR. | | | REVISIONS |

| DIMENSIONS SHOWN (METRIC) INCH | |
|---|----------------|
| UNLESS OTHERWISE SPECIFIED TOLERANCES: ANGULAR ± 1/2° | |
| 3 PLACE | ± .010 |
| 2 PLACE | ± .014 ± 0.25 |
| 1 PLACE | ± 0.35 |
| DRAFT WHERE APPLICABLE MUST REMAIN WITHIN DIMENSIONS | |
| DRWG. BY: WAZ | CHK'D. BY: WAZ |
| APP'D. BY: | SCALE: 4:1 |

| MFG. SH. REV. | |
|--|--|
| REVISE ONLY ON CAD SYSTEM | |
| TITLE: ASSEMBLY, SL CONNECTOR (SINGLE ROW- (2.54)/.100 GRID) | |
| MOLEX INCORPORATED SHEET NO. DATE 10/09/84 | |
| PART NO. SDA-70400-0526-0549 | |
| SEE CHART | |
| THIS DRAWING CONTAINS INFORMATION THAT IS PROPRIETARY TO MOLEX INC. AND SHOULD NOT BE USED WITHOUT WRITTEN PERMISSION. | |